



Wireless Barcode Scanner

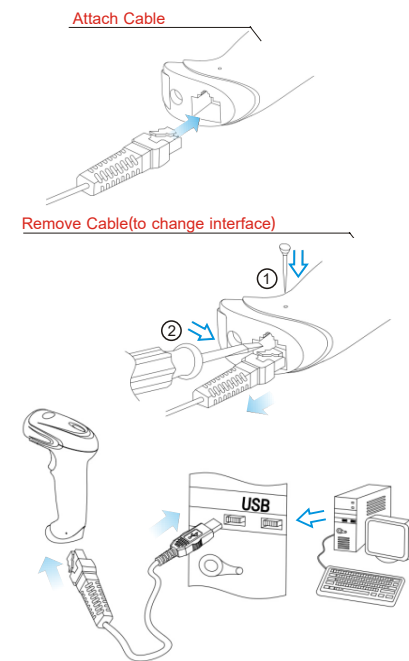
Model: ES017

www.eskynow.us.

Introduction

This Esky ES017 Wired Barcode Scanner delivers blazing laser-quality scanning speed on both 1D and 2D barcode displayed on paper labels and electronic devices such as mobile phones, tablets and more, allowing you to accommodate 2D barcode without sacrificing scanning quality or performance.

Diagram



-1-

Technical Parameters

Voltage	DC 3.7V-5V
Current	130mA (Idle Current 33 mA)
Operation Method	USB wired
Light Source	625 nm red LED lights
Scanning Type	Two-way single scan
Scanning Mode	Manual trigger / automatic scanning
Scanning Rate	45 mil/s
Sensor Resolution	752 x 480
Min. Resolution	Code 39 4.8mil, UPC 60% 5mil, PDF 417 5mil, Datamatrix 7.5mil
Scanning Angle	Reading angle: $\pm 60^\circ$, Pitch angle: $\pm 45^\circ$ Front: $\pm 65^\circ$, Skew angle: $\pm 55^\circ$
Print Contrast	25% minimum reflective difference
Reading Distance	6 ~ 30cm
Scanning Angle	Fanning: 30° ; Horizontal: 75° ; Vertical: 65°
Lift type	Buzzer, indicator light
Decode Capability	1D: UPC / EAN, UPC / EAN with supplementals, Bookland EAN, ISSN, UCC Coupon Extended Code, Code 128, GS1-128, ISBT 128, Code 39, Code 39 Full ASCII, Trioptic Code 39, Code 32, Code 93, Code 11, Matrix 2 of 5, Interleaved 2 of 5, Discrete 2 of 5, Codabar, MSI, Chinese 2 of 5, GS1 DataBar variants, Korean 3 of 5, ISBT Concat 2D: PDF417, MicroPDF417, Composite Codes, TLC-39, Data Matrix, Maxicode, QR Code, Micro QR, Aztec

-2-

Operating Temperature	0°C - 40°C
Storage Temperature	-40°C - 70°C
Relative Humidity	5% - 95% (non condensing)
Anti-seismic	1.5m drop test
Ambient brightness	86,000lx (Max. direct sunlight), 1600lx (Max. incandescent)
Electrostatic Discharge	Conforms to ± 15 KV air discharge and ± 8 KV of contact discharge
Dimensions	168mm x 87mm x 70mm
Weight	186g
Comply with	CE, FCC, IEC 60825-1 Class 2, GB7247.1-2001

Package Contents

- 1 x Barcode Scanner
- 1 x USB Cable
- 1 x User Manual
- 1 x Warranty Card

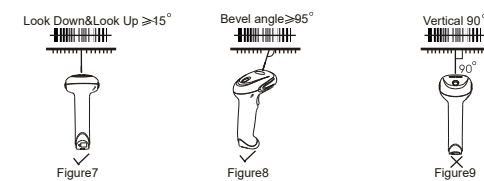
Operational Guide

- How to scan barcode
- Barcode read



-3-

Barcode Scanner Use



b. How to set up scanner

- Return to Factory Default



- Scan the USB Keyboard setting code to set the interface as USB keyboard.



- Read Mode



-4-

- Caps Lock



- Enter/Line Feed Settings



-5-

- Tab Setting



- Aimer Setting



- Light Setting



-6-

Troubleshooting

- Can't scan barcodes

- Check whether it has enough power.
- Ensure all the cable connections are secure and correct.

- Can not decode barcodes

- Unreadable barcodes. Ensure the scanned barcode is not defaced or it is complied with scanner's decoding capability.
- Incorrect distance between scanner and barcode. Move the scanner closer to or further from barcodes.

- No data transmission or error data display to PC

- Slow down scanning speed.
- Ensure the barcode scanner has been well connected to the USB port of PC.

-7-